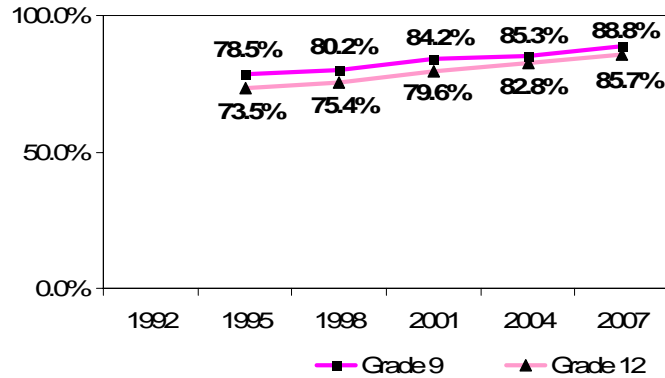


# Minnesota Student Survey Initial Trend Graphs 1992 through 2007 Survey Administrations

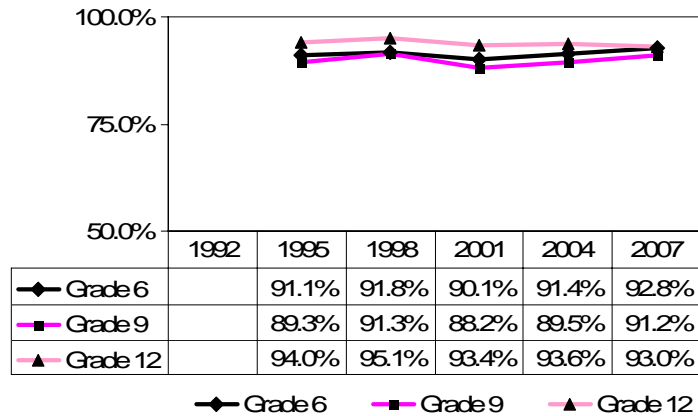
## School Plans

### Plans to go to college or beyond

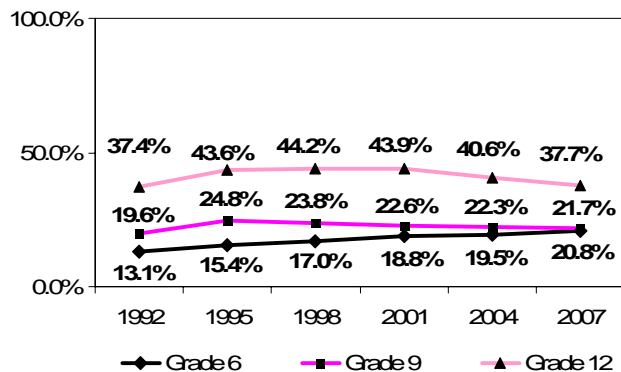


## School Safety and Connectedness

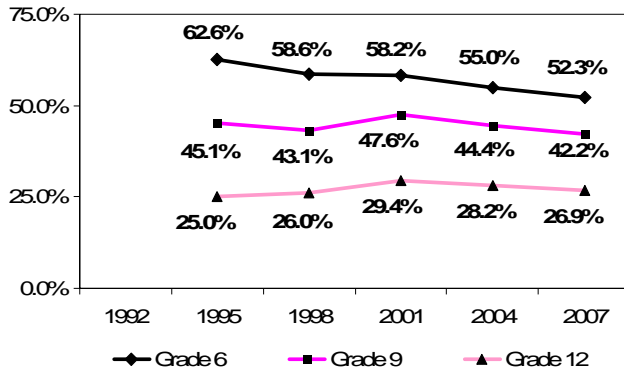
### Feel safe at school (strongly agree or agree)



### Skipped school one or more of past 30 days

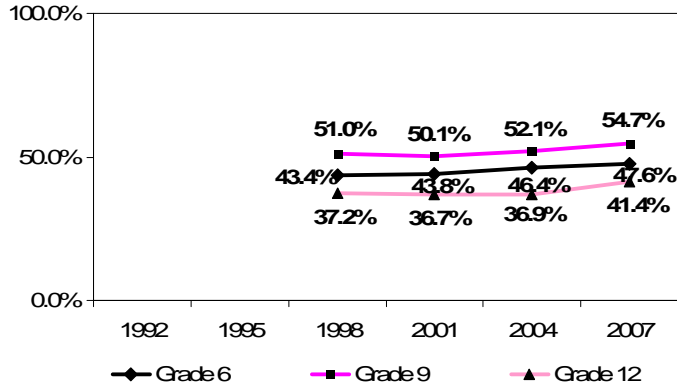


**A student pushed, shoved, or grabbed you on school property in the past 12 months**



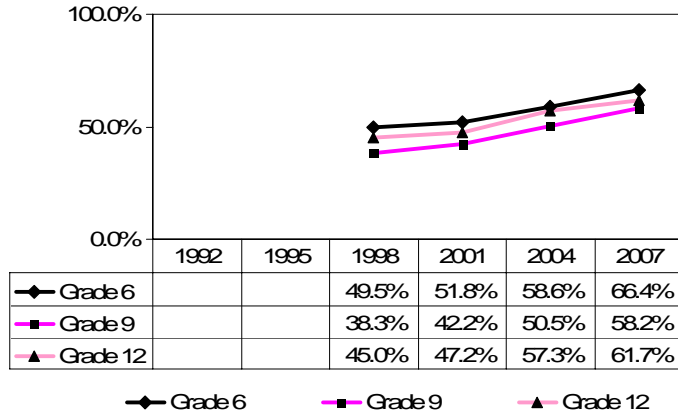
**Physical Activity**

**Physically active for 30 minutes or more on at least five of the last seven days**



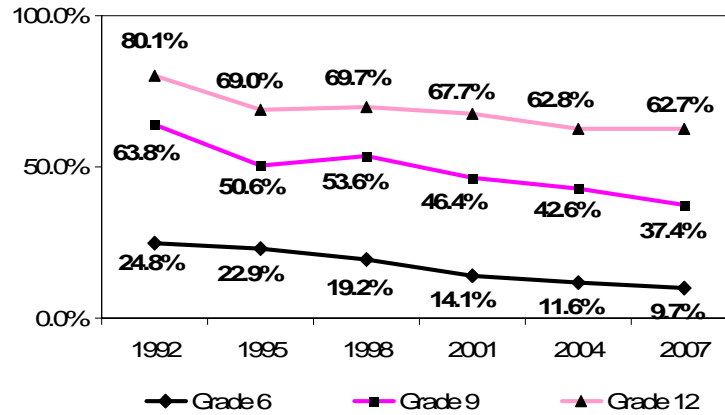
**Seatbelt Use**

**Always wears a seatbelt when riding in a car**

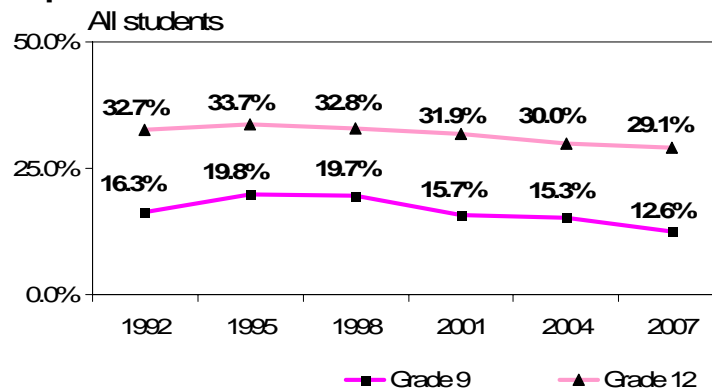


# Alcohol

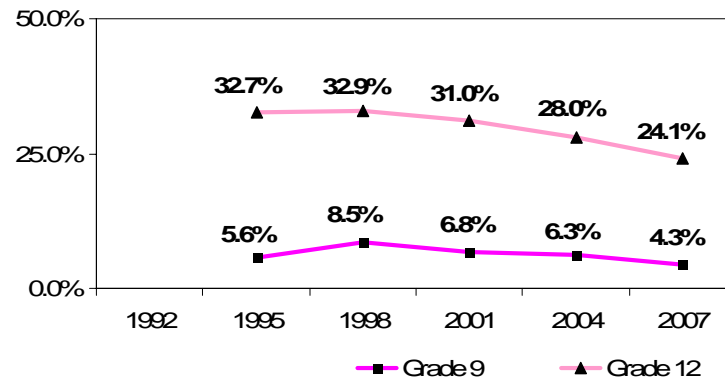
## Used alcohol one or more times in past year All students



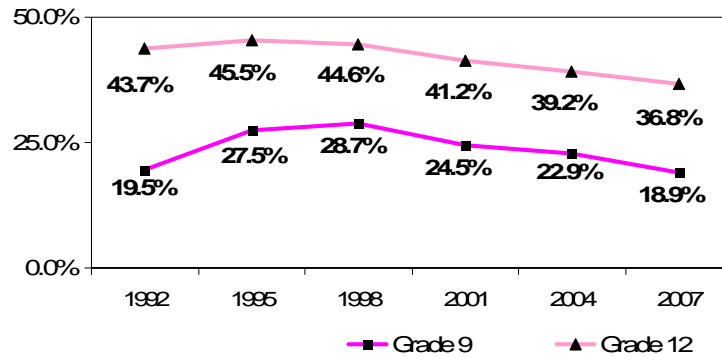
## Binge drinking (five or more times in a row) in the past two weeks



## Drove motor vehicles after using alcohol or drugs one or more times in the past year

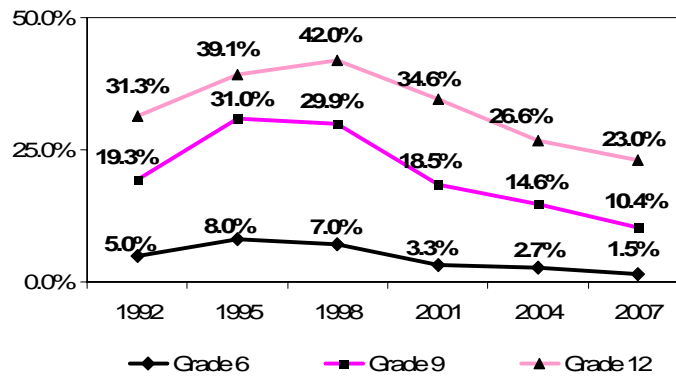


**Often or rarely rides with friends after they have been using alcohol or drugs**



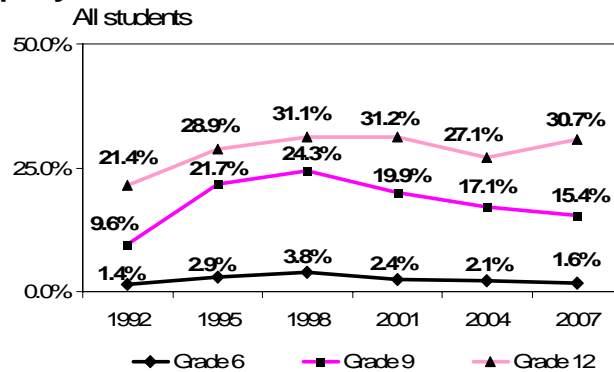
**Tobacco**

**Smoked cigarettes during previous 30 days**  
All students



**Other Drugs**

**Used marijuana one or more times in the past year**



**Used methamphetamine one or more times  
in past year**

